

## Product datasheet for **TA363390**

### Ahsa2 Rabbit Polyclonal Antibody

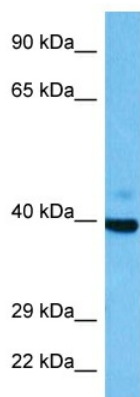
#### Product data:

Product Type:	Primary Antibodies
Applications:	WB
Reactivity:	Mouse
Host:	Rabbit
Clonality:	Polyclonal
Immunogen:	The immunogen is a synthetic peptide directed towards the N terminal region of mouse AHS2
Specificity:	<b>Expected reactivity:</b> Mouse
Formulation:	Liquid. Purified antibody supplied in 1x PBS buffer with 0.09% (w/v) sodium azide and 2% sucrose.
Concentration:	lot specific
Purification:	Affinity purified
Conjugation:	Unconjugated
Storage:	For short term use, store at 2-8°C up to 1 week. For long term storage, store at -20°C in small aliquots to prevent freeze-thaw cycles.
Stability:	Shelf life: one year from despatch.
Predicted Protein Size:	38 kDa
Gene Name:	AHA1, activator of heat shock protein ATPase 2
Database Link:	<a href="#">NP_001277583.1</a> <a href="#">Entrez Gene 268390 Mouse</a> <a href="#">Q8N9S3</a>
Background:	Co-chaperone that stimulates HSP90 ATPase activity.
Synonyms:	DKFZp564C236; FLJ34679; FLJ41715; Hch1; OTTHUMP00000159809



[View online »](#)

## Product images:



Host: Rabbit  
Target Name: Ahsa2  
Sample Type: Mouse Skeletal Muscle Lysate  
Antibody Dilution: 1.0µg/ml

Host: Rabbit  
Target Name: AHSA2  
Sample Tissue: Mouse Skeletal Muscle lysates  
Antibody Dilution: 1ug/ml