

Product datasheet for **TA363389**

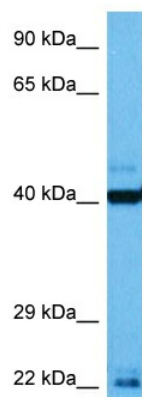
Inca1 Rabbit Polyclonal Antibody

Product data:

Product Type:	Primary Antibodies
Applications:	WB
Reactivity:	Mouse
Host:	Rabbit
Clonality:	Polyclonal
Immunogen:	The immunogen is a synthetic peptide directed towards the middle region of mouse INCA1
Specificity:	Expected reactivity: Mouse
Formulation:	Liquid. Purified antibody supplied in 1x PBS buffer with 0.09% (w/v) sodium azide and 2% sucrose.
Concentration:	lot specific
Purification:	Affinity purified
Conjugation:	Unconjugated
Storage:	For short term use, store at 2-8°C up to 1 week. For long term storage, store at -20°C in small aliquots to prevent freeze-thaw cycles.
Stability:	Shelf life: one year from despatch.
Predicted Protein Size:	23 kDa
Gene Name:	inhibitor of CDK, cyclin A1 interacting protein 1
Database Link:	NP_001239411.1 Entrez Gene 103844 Mouse Q6PKN7-2
Background:	The function of this protein remains unknown.
Synonyms:	HSD45; MGC148150; MGC148151

[View online »](#)

Product images:



Host: Rabbit
Target Name: Inca1
Sample Type: Mouse Heart Lysate
Antibody Dilution: 1.0µg/ml

Host: Rabbit
Target Name: INCA1
Sample Tissue: Mouse Heart lysates
Antibody Dilution: 1ug/ml