

## Product datasheet for **TA363382**

### Arhgef15 Rabbit Polyclonal Antibody

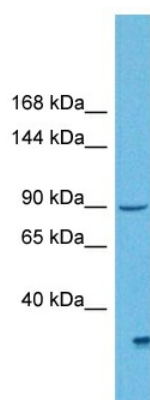
#### Product data:

Product Type:	Primary Antibodies
Applications:	WB
Reactivity:	Mouse
Host:	Rabbit
Clonality:	Polyclonal
Immunogen:	The immunogen is a synthetic peptide directed towards the N terminal region of mouse ARHGEF15
Specificity:	<b>Expected reactivity:</b> Mouse
Formulation:	Liquid. Purified antibody supplied in 1x PBS buffer with 0.09% (w/v) sodium azide and 2% sucrose. <i>Note that this product is shipped as lyophilized powder to China customers.</i>
Concentration:	lot specific
Purification:	Affinity purified
Conjugation:	Unconjugated
Storage:	For short term use, store at 2-8°C up to 1 week. For long term storage, store at -20°C in small aliquots to prevent freeze-thaw cycles.
Stability:	Shelf life: one year from despatch.
Predicted Protein Size:	88 kDa
Gene Name:	Rho guanine nucleotide exchange factor (GEF) 15
Database Link:	<a href="#">NP_808234.2</a> <a href="#">Entrez Gene 442801 Mouse</a> <a href="#">Q5FWH6-2</a>
Background:	Specific GEF for RhoA activation. Does not activate RAC1 or CDC42. Regulates vascular smooth muscle contractility. Negatively regulates excitatory synapse development by suppressing the synapse-promoting activity of EPHB2.
Synonyms:	ARGEF15; FLJ13791; KIAA0915; MGC44868; OTTHUMP00000135329; Vsm-RhoGEF



[View online »](#)

## Product images:



Host: Rabbit  
Target Name: Arhgef15  
Sample Type: Mouse Testis Lysate  
Antibody Dilution: 1.0 $\mu$ g/ml

Host: Rabbit  
Target Name: ARHGEF15  
Sample Tissue: Mouse Testis lysates  
Antibody Dilution: 1  $\mu$ g/ml