

Product datasheet for **TA363377**

Disp2 Rabbit Polyclonal Antibody

Product data:

Product Type:	Primary Antibodies
Applications:	WB
Reactivity:	Mouse
Host:	Rabbit
Clonality:	Polyclonal
Immunogen:	The immunogen is a synthetic peptide directed towards the C terminal region of mouse DISP2
Specificity:	Expected reactivity: Mouse
Formulation:	Liquid. Purified antibody supplied in 1x PBS buffer with 0.09% (w/v) sodium azide and 2% sucrose. <i>Note that this product is shipped as lyophilized powder to China customers.</i>
Concentration:	lot specific
Purification:	Affinity purified
Conjugation:	Unconjugated
Storage:	For short term use, store at 2-8°C up to 1 week. For long term storage, store at -20°C in small aliquots to prevent freeze-thaw cycles.
Stability:	Shelf life: one year from despatch.
Predicted Protein Size:	148 kDa
Gene Name:	dispatched homolog 2 (Drosophila)
Database Link:	NP_733481.1 Entrez Gene 214240 Mouse Q8CIP5



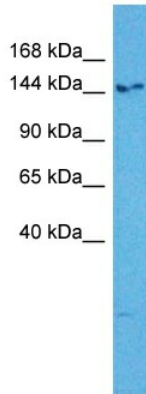
[View online »](#)

Background:

The pattern of cellular proliferation and differentiation that leads to normal development of embryonic structures often depends upon the localized production of secreted protein signals. Cells surrounding the source of a particular signal respond in a graded manner according to the effective concentration of the signal, and this response produces the pattern of cell types constituting the mature structure. A segment-polarity gene known as dispatched has been identified in *Drosophila* and its protein product is required for normal Hedgehog (Hh) signaling.

Synonyms:

DISPB; DKFZp547N223; HsT16908; KIAA1742

Product images:

Host: Rabbit
Target Name: Disp2
Sample Type: Mouse Lung Lysate
Antibody Dilution: 1.0 μ g/ml

Host: Rabbit
Target Name: DISP2
Sample Tissue: Mouse Lung lysates
Antibody Dilution: 1 μ g/ml