

Product datasheet for **TA363372**

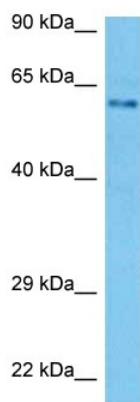
Slc7a13 Rabbit Polyclonal Antibody

Product data:

Product Type:	Primary Antibodies
Applications:	WB
Reactivity:	Rat
Host:	Rabbit
Clonality:	Polyclonal
Immunogen:	The immunogen is a synthetic peptide directed towards the N terminal region of rat SLC7A13
Specificity:	Expected reactivity: Rat
Formulation:	Liquid. Purified antibody supplied in 1x PBS buffer with 0.09% (w/v) sodium azide and 2% sucrose. <i>Note that this product is shipped as lyophilized powder to China customers.</i>
Concentration:	lot specific
Purification:	Affinity purified
Conjugation:	Unconjugated
Storage:	For short term use, store at 2-8°C up to 1 week. For long term storage, store at -20°C in small aliquots to prevent freeze-thaw cycles.
Stability:	Shelf life: one year from despatch.
Predicted Protein Size:	54 kDa
Gene Name:	solute carrier family 7 member 13
Database Link:	NP_001012100.1 Entrez Gene 313089 Rat Q5RKI7
Background:	Mediates the transport L-aspartate and L-glutamate in a sodium-independent manner.
Synonyms:	AGT-1; AGT1; MGC150476; MGC150477; XAT2



[View online »](#)

Product images:

Host: Rabbit
Target Name: Slc7a13
Sample Type: Rat Skeletal Muscle Lysate
Antibody Dilution: 1.0 μ g/ml

Host: Rabbit
Target Name: SLC7A13
Sample Tissue: Rat Skeletal Muscle lysates
Antibody Dilution: 1ug/ml