

Product datasheet for **TA363370**

Prelid1 Rabbit Polyclonal Antibody

Product data:

Product Type:	Primary Antibodies
Applications:	WB
Reactivity:	Mouse
Host:	Rabbit
Clonality:	Polyclonal
Immunogen:	The immunogen is a synthetic peptide directed towards the N terminal region of mouse PRELID1
Specificity:	Expected reactivity: Mouse
Formulation:	Liquid. Purified antibody supplied in 1x PBS buffer with 0.09% (w/v) sodium azide and 2% sucrose.
Concentration:	lot specific
Purification:	Affinity purified
Conjugation:	Unconjugated
Storage:	For short term use, store at 2-8°C up to 1 week. For long term storage, store at -20°C in small aliquots to prevent freeze-thaw cycles.
Stability:	Shelf life: one year from despatch.
Predicted Protein Size:	23 kDa
Gene Name:	PRELI domain containing 1
Database Link:	NP_079872.4 Entrez Gene 66494 Mouse Q8R107



[View online »](#)

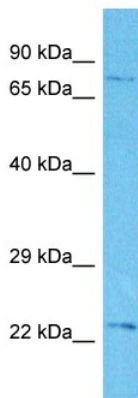
Background:

Involved in the modulation of the mitochondrial apoptotic pathway by ensuring the accumulation of cardiolipin (CL) in mitochondrial membranes. In vitro, the TRIAP1:PRELID1 complex mediates the transfer of phosphatidic acid (PA) between liposomes and probably functions as a PA transporter across the mitochondrion intermembrane space to provide PA for CL synthesis in the inner membrane. Regulates the mitochondrial apoptotic pathway in primary Th cells. Regulates Th cell differentiation by down-regulating STAT6 thereby reducing IL-4-induced Th2 cell number. May be important for the development of vital and immunocompetent organs (By similarity).

Synonyms:

CGI-106; MGC87972; PRELI; PX19

Product images:



Host: Rabbit
 Target Name: PreliD1
 Sample Type: Mouse Testis Lysate
 Antibody Dilution: 1.0µg/ml

Host: Rabbit
 Target Name: PRELID1
 Sample Tissue: Mouse Testis lysates
 Antibody Dilution: 1ug/ml