

Product datasheet for **TA363369**

Ccdc3 Rabbit Polyclonal Antibody

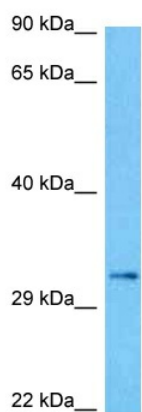
Product data:

Product Type:	Primary Antibodies
Applications:	WB
Reactivity:	Mouse
Host:	Rabbit
Clonality:	Polyclonal
Immunogen:	The immunogen is a synthetic peptide directed towards the middle terminal region of mouse CCDC3
Specificity:	Expected reactivity: Mouse
Formulation:	Liquid. Purified antibody supplied in 1x PBS buffer with 0.09% (w/v) sodium azide and 2% sucrose. <i>Note that this product is shipped as lyophilized powder to China customers.</i>
Concentration:	lot specific
Purification:	Affinity purified
Conjugation:	Unconjugated
Storage:	For short term use, store at 2-8°C up to 1 week. For long term storage, store at -20°C in small aliquots to prevent freeze-thaw cycles.
Stability:	Shelf life: one year from despatch.
Predicted Protein Size:	30 kDa
Gene Name:	coiled-coil domain containing 3
Database Link:	NP_083080.1 Entrez Gene 74186 Mouse Q9D6Y1
Background:	Negatively regulates TNF-alpha-induced pro-inflammatory response in endothelial cells (ECs) via inhibition of TNF-alpha-induced NF-kappaB activation in ECs (By similarity). Positively regulates lipid accumulation in adipose cells.
Synonyms:	DKFZp761F241; FLJ20925; RP11-347I22.1



[View online »](#)

Product images:



Host: Rabbit
Target Name: Ccdc3
Sample Type: Mouse Heart Lysate
Antibody Dilution: 1.0 μ g/ml

Host: Rabbit
Target Name: CCDC3
Sample Tissue: Mouse Heart lysates
Antibody Dilution: 1 μ g/ml