

Product datasheet for **TA363368**

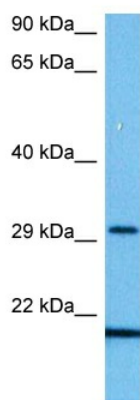
Ceacam10 Rabbit Polyclonal Antibody

Product data:

Product Type:	Primary Antibodies
Applications:	WB
Reactivity:	Mouse
Host:	Rabbit
Clonality:	Polyclonal
Immunogen:	The immunogen is a synthetic peptide directed towards the middle terminal region of mouse CEACAM10
Specificity:	Expected reactivity: Mouse
Formulation:	Liquid. Purified antibody supplied in 1x PBS buffer with 0.09% (w/v) sodium azide and 2% sucrose.
Concentration:	lot specific
Purification:	Affinity purified
Conjugation:	Unconjugated
Storage:	For short term use, store at 2-8°C up to 1 week. For long term storage, store at -20°C in small aliquots to prevent freeze-thaw cycles.
Stability:	Shelf life: one year from despatch.
Predicted Protein Size:	29 kDa
Gene Name:	carcinoembryonic antigen-related cell adhesion molecule 10
Database Link:	NP_031701.3 Entrez Gene 26366 Mouse Q61400
Background:	May interact with other CEACAM proteins on the sperm surface.
Synonyms:	Bgp3; Cea10



Product images:



Host: Rabbit
 Target Name: Ceacam10
 Sample Type: Mouse Small Intestine Lysate
 Antibody Dilution: 1.0µg/ml

Host: Rabbit
 Target Name: CEACAM10
 Sample Tissue: Mouse Small Intestine lysates
 Antibody Dilution: 1ug/ml