

Product datasheet for **TA363366**

Slc25a18 Rabbit Polyclonal Antibody

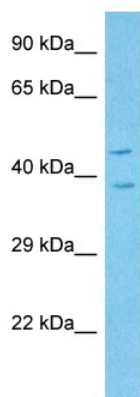
Product data:

Product Type:	Primary Antibodies
Applications:	WB
Reactivity:	Mouse
Host:	Rabbit
Clonality:	Polyclonal
Immunogen:	The immunogen is a synthetic peptide directed towards the middle region of mouse SLC25A18
Specificity:	Expected reactivity: Mouse
Formulation:	Liquid. Purified antibody supplied in 1x PBS buffer with 0.09% (w/v) sodium azide and 2% sucrose.
Concentration:	lot specific
Purification:	Affinity purified
Conjugation:	Unconjugated
Storage:	For short term use, store at 2-8°C up to 1 week. For long term storage, store at -20°C in small aliquots to prevent freeze-thaw cycles.
Stability:	Shelf life: one year from despatch.
Predicted Protein Size:	35 kDa
Gene Name:	solute carrier family 25 (mitochondrial carrier), member 18
Database Link:	NP_001074517.1 Entrez Gene 71803 Mouse Q9DB41
Background:	Involved in the transport of glutamate across the inner mitochondrial membrane. Glutamate is cotransported with H ⁺ (By similarity).
Synonyms:	GC-2; GC2; OTTHUMP00000196212



[View online »](#)

Product images:



Host: Rabbit
Target Name: Slc25a18
Sample Type: Mouse Liver Lysate
Antibody Dilution: 1.0µg/ml

Host: Rabbit
Target Name: SLC25A18
Sample Tissue: Mouse Liver lysates
Antibody Dilution: 1ug/ml