

Product datasheet for **TA363351**

Kctd5 Rabbit Polyclonal Antibody

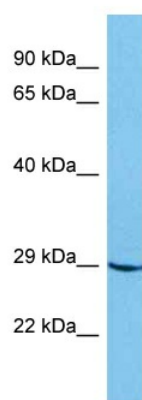
Product data:

Product Type:	Primary Antibodies
Applications:	WB
Reactivity:	Mouse
Host:	Rabbit
Clonality:	Polyclonal
Immunogen:	The immunogen is a synthetic peptide directed towards the middle region of mouse KCTD5
Specificity:	Expected reactivity: Mouse
Formulation:	Liquid. Purified antibody supplied in 1x PBS buffer with 0.09% (w/v) sodium azide and 2% sucrose. <i>Note that this product is shipped as lyophilized powder to China customers.</i>
Concentration:	lot specific
Purification:	Affinity purified
Conjugation:	Unconjugated
Storage:	For short term use, store at 2-8°C up to 1 week. For long term storage, store at -20°C in small aliquots to prevent freeze-thaw cycles.
Stability:	Shelf life: one year from despatch.
Predicted Protein Size:	26 kDa
Gene Name:	potassium channel tetramerisation domain containing 5
Database Link:	NP_081284.2 Entrez Gene 69259 Mouse Q9NXV2
Background:	Its interaction with CUL3 suggests that it may act as a substrate adapter in some E3 ligase complex. Does not affect the function of Kv channel Kv2.1/KCNB1, Kv1.2/KCNA2, Kv4.2/KCND2 and Kv3.4/KCNC4.
Synonyms:	FLJ20040



[View online »](#)

Product images:



Host: Rabbit
Target Name: Kctd5
Sample Type: Mouse Pancreas Lysate
Antibody Dilution: 1.0 μ g/ml

Host: Rabbit
Target Name: KCTD5
Sample Tissue: Mouse Pancreas lysates
Antibody Dilution: 1 μ g/ml