

Product datasheet for **TA363349**

Gpcpd1 Rabbit Polyclonal Antibody

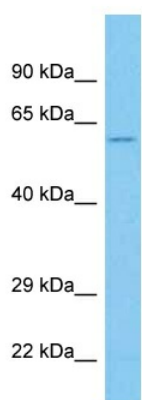
Product data:

Product Type:	Primary Antibodies
Applications:	WB
Reactivity:	Mouse
Host:	Rabbit
Clonality:	Polyclonal
Immunogen:	The immunogen is a synthetic peptide directed towards the C terminal region of mouse GPCPD1
Specificity:	Expected reactivity: Mouse
Formulation:	Liquid. Purified antibody supplied in 1x PBS buffer with 0.09% (w/v) sodium azide and 2% sucrose. <i>Note that this product is shipped as lyophilized powder to China customers.</i>
Concentration:	lot specific
Purification:	Affinity purified
Conjugation:	Unconjugated
Storage:	For short term use, store at 2-8°C up to 1 week. For long term storage, store at -20°C in small aliquots to prevent freeze-thaw cycles.
Stability:	Shelf life: one year from despatch.
Predicted Protein Size:	54 kDa
Gene Name:	glycerophosphocholine phosphodiesterase 1
Database Link:	NP_001277979.1 Entrez Gene 74182 Mouse Q8COL9-2
Background:	May be involved in the negative regulation of skeletal muscle differentiation, independently of its glycerophosphocholine phosphodiesterase activity.
Synonyms:	2310004G06Rik; 2310032D16Rik; AU015213; Gde5; mKIAA1434; Prei4; RGD735140



[View online »](#)

Product images:



Host: Rabbit
Target Name: Gpcpd1
Sample Type: Mouse Spleen Lysate
Antibody Dilution: 1.0 μ g/ml

Host: Rabbit
Target Name: GPCPD1
Sample Tissue: Mouse Spleen lysates
Antibody Dilution: 1 μ g/ml