

## Product datasheet for **TA363347**

### **Tmem59 Rabbit Polyclonal Antibody**

#### **Product data:**

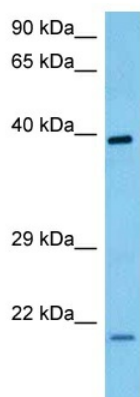
Product Type:	Primary Antibodies
Applications:	WB
Reactivity:	Mouse
Host:	Rabbit
Clonality:	Polyclonal
Immunogen:	The immunogen is a synthetic peptide directed towards the middle terminal region of mouse TMEM59
Specificity:	<b>Expected reactivity:</b> Mouse
Formulation:	Liquid. Purified antibody supplied in 1x PBS buffer with 0.09% (w/v) sodium azide and 2% sucrose. <i>Note that this product is shipped as lyophilized powder to China customers.</i>
Concentration:	lot specific
Purification:	Affinity purified
Conjugation:	Unconjugated
Storage:	For short term use, store at 2-8°C up to 1 week. For long term storage, store at -20°C in small aliquots to prevent freeze-thaw cycles.
Stability:	Shelf life: one year from despatch.
Predicted Protein Size:	36 kDa
Gene Name:	transmembrane protein 59
Database Link:	<a href="#">NP_083841.4</a> <a href="#">Entrez Gene 56374 Mouse</a> <a href="#">Q9QY73</a>
Background:	Acts as a regulator of autophagy in response to S.aureus infection by promoting activation of LC3 (MAP1LC3A, MAP1LC3B or MAP1LC3C). Acts by interacting with ATG16L1, leading to promote a functional complex between LC3 and ATG16L1 and promoting LC3 lipidation and subsequent activation of autophagy. Modulates the O-glycosylation and complex N-glycosylation steps occurring during the Golgi maturation of several proteins such as APP, BACE1, SEAP or PRNP. Inhibits APP transport to the cell surface and further shedding.



[View online »](#)

Synonyms: C1orf8; FLJ42977; HSPC001

### Product images:



Host: Rabbit  
Target Name: Tmem59  
Sample Type: Mouse Spleen Lysate  
Antibody Dilution: 1.0 $\mu$ g/ml

Host: Rabbit  
Target Name: TMEM59  
Sample Tissue: Mouse Spleen lysates  
Antibody Dilution: 1 $\mu$ g/ml