

Product datasheet for **TA363346**

Syt13 Rabbit Polyclonal Antibody

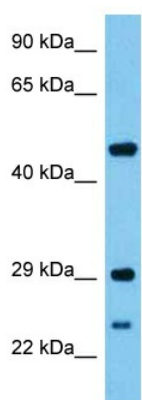
Product data:

Product Type:	Primary Antibodies
Applications:	WB
Reactivity:	Mouse
Host:	Rabbit
Clonality:	Polyclonal
Immunogen:	The immunogen is a synthetic peptide directed towards the middle region of mouse SYTL3
Specificity:	Expected reactivity: Mouse
Formulation:	Liquid. Purified antibody supplied in 1x PBS buffer with 0.09% (w/v) sodium azide and 2% sucrose.
Concentration:	lot specific
Purification:	Affinity purified
Conjugation:	Unconjugated
Storage:	For short term use, store at 2-8°C up to 1 week. For long term storage, store at -20°C in small aliquots to prevent freeze-thaw cycles.
Stability:	Shelf life: one year from despatch.
Predicted Protein Size:	46 kDa
Gene Name:	synaptotagmin-like 3
Database Link:	NP_113572.1 Entrez Gene 83672 Mouse Q99N48-2
Background:	May act as Rab effector protein and play a role in vesicle trafficking. Binds phospholipids in the presence of calcium ions.
Synonyms:	exophilin-6; MGC105130; MGC118883; MGC118884; MGC118885; SLP3



[View online »](#)

Product images:



Host: Rabbit
Target Name: Syt13
Sample Type: Mouse Skeletal Muscle Lysate
Antibody Dilution: 1.0 μ g/ml

Host: Rabbit
Target Name: SYTL3
Sample Tissue: Mouse Skeletal Muscle lysates
Antibody Dilution: 1 μ g/ml