

## Product datasheet for **TA363344**

### Vwa1 Rabbit Polyclonal Antibody

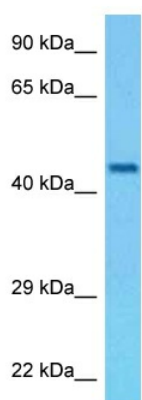
#### Product data:

Product Type:	Primary Antibodies
Applications:	WB
Reactivity:	Rat
Host:	Rabbit
Clonality:	Polyclonal
Immunogen:	The immunogen is a synthetic peptide directed towards the N terminal region of rat VWA1
Specificity:	<b>Expected reactivity:</b> Rat
Formulation:	Liquid. Purified antibody supplied in 1x PBS buffer with 0.09% (w/v) sodium azide and 2% sucrose.
Concentration:	lot specific
Purification:	Affinity purified
Conjugation:	Unconjugated
Storage:	For short term use, store at 2-8°C up to 1 week. For long term storage, store at -20°C in small aliquots to prevent freeze-thaw cycles.
Stability:	Shelf life: one year from despatch.
Predicted Protein Size:	45 kDa
Gene Name:	von Willebrand factor A domain containing 1
Database Link:	<a href="#">NP_001013960.1</a> <a href="#">Entrez Gene 298683 Rat</a> <a href="#">Q642A6</a>
Background:	Promotes matrix assembly.
Synonyms:	DKFZp761O051; FLJ22215; VWA-1; WARP



[View online »](#)

Product images:



Host: Rabbit  
Target Name: Vwa1  
Sample Type: Rat Brain Lysate  
Antibody Dilution: 1.0 $\mu$ g/ml

Host: Rabbit  
Target Name: VWA1  
Sample Tissue: Rat Brain lysates  
Antibody Dilution: 1 $\mu$ g/ml