

Product datasheet for **TA363341**

Alpk1 Rabbit Polyclonal Antibody

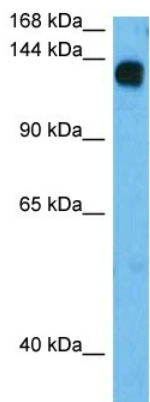
Product data:

Product Type:	Primary Antibodies
Applications:	WB
Reactivity:	Mouse
Host:	Rabbit
Clonality:	Polyclonal
Immunogen:	The immunogen is a synthetic peptide directed towards the N terminal region of mouse ALPK1
Specificity:	Expected reactivity: Mouse
Formulation:	Liquid. Purified antibody supplied in 1x PBS buffer with 0.09% (w/v) sodium azide and 2% sucrose. <i>Note that this product is shipped as lyophilized powder to China customers.</i>
Concentration:	lot specific
Purification:	Affinity purified
Conjugation:	Unconjugated
Storage:	For short term use, store at 2-8°C up to 1 week. For long term storage, store at -20°C in small aliquots to prevent freeze-thaw cycles.
Stability:	Shelf life: one year from despatch.
Predicted Protein Size:	135 kDa
Gene Name:	alpha-kinase 1
Database Link:	Entrez Gene 71481 Mouse Q9CXB8
Background:	Kinases that recognize phosphorylation sites in which the surrounding peptides have an alpha-helical conformation.
Synonyms:	8430410J10Rik; FLJ22670; KIAA1527; Lak



[View online »](#)

Product images:



Host: Rabbit
 Target Name: Alpk1
 Sample Type: Mouse Skeletal Muscle Lysate
 Antibody Dilution: 1.0µg/ml

Host: Rabbit
 Target Name: ALPK1
 Sample Tissue: Mouse Skeletal Muscle lysates
 Antibody Dilution: 1ug/ml