

## Product datasheet for **TA363339**

### Clybl Rabbit Polyclonal Antibody

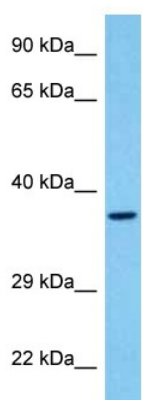
#### Product data:

Product Type:	Primary Antibodies
Applications:	WB
Reactivity:	Rat
Host:	Rabbit
Clonality:	Polyclonal
Immunogen:	The immunogen is a synthetic peptide directed towards the N terminal region of rat CLYBL
Specificity:	<b>Expected reactivity:</b> Rat
Formulation:	Liquid. Purified antibody supplied in 1x PBS buffer with 0.09% (w/v) sodium azide and 2% sucrose.
Concentration:	lot specific
Purification:	Affinity purified
Conjugation:	Unconjugated
Storage:	For short term use, store at 2-8°C up to 1 week. For long term storage, store at -20°C in small aliquots to prevent freeze-thaw cycles.
Stability:	Shelf life: one year from despatch.
Predicted Protein Size:	37 kDa
Gene Name:	citrate lyase beta like
Database Link:	<a href="#">NP_083832.2</a> <a href="#">Entrez Gene 69634 Mouse</a> <a href="#">Q5I0K3</a>
Background:	Mitochondrial citramalyl-CoA lyase indirectly involved in the vitamin B12 metabolism. Converts citramalyl-CoA into acetyl-CoA and pyruvate in the C5-dicarboxylate catabolism pathway. The C5-dicarboxylate catabolism pathway is required to detoxify itaconate, a vitamin B12-poisoning metabolite. Also acts as a malate synthase in vitro, converting glyoxylate and acetyl-CoA to malate. Also acts as a beta-methylmalate synthase in vitro, by mediating conversion of glyoxylate and propionyl-CoA to beta-methylmalate. Also has very weak citramalate synthase activity in vitro.
Synonyms:	bA134O15.1; CLB



[View online »](#)

## Product images:



Host: Rabbit  
Target Name: Clybl  
Sample Type: Rat Heart Lysate  
Antibody Dilution: 1.0 $\mu$ g/ml

Host: Rabbit  
Target Name: CLYBL  
Sample Tissue: Rat Heart lysates  
Antibody Dilution: 1  $\mu$ g/ml