

Product datasheet for **TA363337**

Ano7 Rabbit Polyclonal Antibody

Product data:

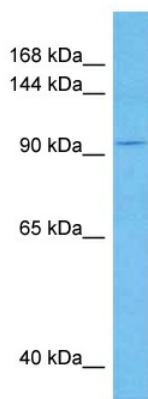
Product Type:	Primary Antibodies
Applications:	WB
Reactivity:	Rat
Host:	Rabbit
Clonality:	Polyclonal
Immunogen:	The immunogen is a synthetic peptide directed towards the middle region of rat ANO7
Specificity:	Expected reactivity: Rat
Formulation:	Liquid. Purified antibody supplied in 1x PBS buffer with 0.09% (w/v) sodium azide and 2% sucrose. <i>Note that this product is shipped as lyophilized powder to China customers.</i>
Concentration:	lot specific
Purification:	Affinity purified
Conjugation:	Unconjugated
Storage:	For short term use, store at 2-8°C up to 1 week. For long term storage, store at -20°C in small aliquots to prevent freeze-thaw cycles.
Stability:	Shelf life: one year from despatch.
Predicted Protein Size:	94 kDa
Gene Name:	anoctamin 7
Database Link:	NP_001258813.1 Entrez Gene 404545 Mouse Q6IFT6
Background:	This gene encodes a member of the anoctamin family, which in mammals is comprised of 10 members. Anoctamin proteins are proposed to have eight transmembrane domains with both termini facing the cytoplasm and a C-terminal domain of unknown function. While some members have been characterized as calcium-activated chloride channels, this protein is reported to have little anion conductance activity. In humans, this protein is primarily found in prostate tissues and may serve as a target for prostate cancer immunotherapy. Alternative splicing results in multiple transcript variants that encode different isoforms.



[View online »](#)

Synonyms: D-TMPP; DTMPP; IPCA-5; IPCA5; NGEP; PCANAP5; PCANAP5L; TMEM16G

Product images:



Host: Rabbit
Target Name: Ano7
Sample Type: Rat Liver Lysate
Antibody Dilution: 1.0 μ g/ml

Host: Rabbit
Target Name: ANO7
Sample Tissue: Rat Liver lysates
Antibody Dilution: 1 μ g/ml