

Product datasheet for **TA363334**

Arhgef16 Rabbit Polyclonal Antibody

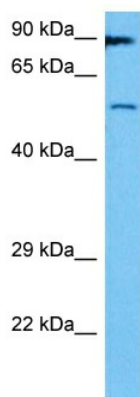
Product data:

Product Type:	Primary Antibodies
Applications:	WB
Reactivity:	Mouse
Host:	Rabbit
Clonality:	Polyclonal
Immunogen:	The immunogen is a synthetic peptide directed towards the middle region of mouse ARHGEF16
Specificity:	Expected reactivity: Mouse
Formulation:	Liquid. Purified antibody supplied in 1x PBS buffer with 0.09% (w/v) sodium azide and 2% sucrose.
Concentration:	lot specific
Purification:	Affinity purified
Conjugation:	Unconjugated
Storage:	For short term use, store at 2-8°C up to 1 week. For long term storage, store at -20°C in small aliquots to prevent freeze-thaw cycles.
Stability:	Shelf life: one year from despatch.
Predicted Protein Size:	80 kDa
Gene Name:	Rho guanine nucleotide exchange factor (GEF) 16
Database Link:	NP_001106215.1 Entrez Gene 230972 Mouse Q3U5C8
Background:	Guanyl-nucleotide exchange factor of the RHOG GTPase stimulating the exchange of RHOG-associated GDP for GTP. May play a role in chemotactic cell migration by mediating the activation of RAC1 by EPHA2. May also activate CDC42 (By similarity).
Synonyms:	GEF16; NBR



[View online »](#)

Product images:



Host: Rabbit
Target Name: Arhgef16
Sample Type: Mouse Stomach Lysate
Antibody Dilution: 1.0µg/ml

Host: Rabbit
Target Name: ARHGEF16
Sample Tissue: Mouse Stomach lysates
Antibody Dilution: 1ug/ml