

## Product datasheet for **TA363332**

### Cd209b Rabbit Polyclonal Antibody

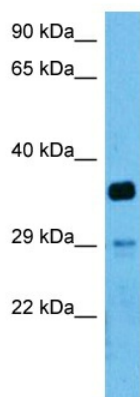
#### Product data:

Product Type:	Primary Antibodies
Applications:	WB
Reactivity:	Mouse
Host:	Rabbit
Clonality:	Polyclonal
Immunogen:	The immunogen is a synthetic peptide directed towards the middle terminal region of mouse CD209B
Specificity:	<b>Expected reactivity:</b> Mouse
Formulation:	Liquid. Purified antibody supplied in 1x PBS buffer with 0.09% (w/v) sodium azide and 2% sucrose.
Concentration:	lot specific
Purification:	Affinity purified
Conjugation:	Unconjugated
Storage:	For short term use, store at 2-8°C up to 1 week. For long term storage, store at -20°C in small aliquots to prevent freeze-thaw cycles.
Stability:	Shelf life: one year from despatch.
Predicted Protein Size:	37 kDa
Gene Name:	CD209b antigen
Database Link:	<a href="#">NP_001032889.3</a> <a href="#">Entrez Gene 69165 Mouse</a> <a href="#">Q8CJ91</a>
Background:	Probable pathogen-recognition receptor. May mediate the endocytosis of pathogens which are subsequently degraded in lysosomal compartments. May recognize in a calcium-dependent manner high mannose N-linked oligosaccharides in a variety of pathogen antigens. Is a receptor for ICAM3, probably by binding to mannose-like carbohydrates.
Synonyms:	1810030I22Rik; mSIGNR1; OtB7; SIGNR1



[View online »](#)

Product images:



Host: Rabbit  
Target Name: Cd209b  
Sample Type: Mouse Testis Lysate  
Antibody Dilution: 1.0 $\mu$ g/ml

Host: Rabbit  
Target Name: CD209B  
Sample Tissue: Mouse Testis lysates  
Antibody Dilution: 1  $\mu$ g/ml