

Product datasheet for **TA363328**

Hbb-b2 Rabbit Polyclonal Antibody

Product data:

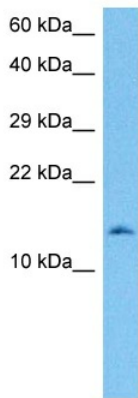
Product Type:	Primary Antibodies
Applications:	WB
Reactivity:	Mouse
Host:	Rabbit
Clonality:	Polyclonal
Immunogen:	The immunogen is a synthetic peptide directed towards the middle region of mouse HBB-B2
Specificity:	Expected reactivity: Mouse
Formulation:	Liquid. Purified antibody supplied in 1x PBS buffer with 0.09% (w/v) sodium azide and 2% sucrose. <i>Note that this product is shipped as lyophilized powder to China customers.</i>
Concentration:	lot specific
Purification:	Affinity purified
Conjugation:	Unconjugated
Storage:	For short term use, store at 2-8°C up to 1 week. For long term storage, store at -20°C in small aliquots to prevent freeze-thaw cycles.
Stability:	Shelf life: one year from despatch.
Predicted Protein Size:	16 kDa
Gene Name:	hemoglobin, beta adult minor chain
Database Link:	NP_058652.1 Entrez Gene 15130 Mouse P02089



[View online »](#)

Background:

This gene encodes a beta polypeptide chain found in adult hemoglobin, which consists of a tetramer of two alpha chains and two beta chains, and which functions in the transport of oxygen to various peripheral tissues. This gene is one of a cluster of beta-hemoglobin genes that are distally regulated by a locus control region, and which are organized along the chromosome in the order of their developmental expression. In mouse, two major strain-specific haplotypes of the beta-globin gene cluster are found - a "single" haplotype found in C57BL/-type strains, which includes two highly similar adult beta-globin genes, beta s and beta t, and a "diffuse" haplotype found in strains such as BALB/c and 129Sv, which includes two somewhat diverse adult beta-globin genes, beta-major and beta-minor. This gene represents the beta-minor adult gene found in the "diffuse" haplotype. Primary chromosome 7 of the mouse reference genome assembly, which is derived from C57BL/6 strain mice, represents the "single" haplotype, while the "diffuse" haplotype is represented in the reference genome collection by the BALB/c strain alternate contig, NT_095534.1.Â

Product images:


Host: Rabbit
 Target Name: Hbb-b2
 Sample Type: Mouse Brain Lysate
 Antibody Dilution: 1.0µg/ml

Host: Rabbit
 Target Name: HBB-B2
 Sample Tissue: Mouse Brain lysates
 Antibody Dilution: 1 µg/ml