

## Product datasheet for **TA363321**

### Gtpbp3 Rabbit Polyclonal Antibody

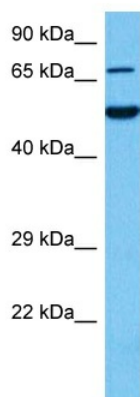
#### Product data:

Product Type:	Primary Antibodies
Applications:	WB
Reactivity:	Mouse
Host:	Rabbit
Clonality:	Polyclonal
Immunogen:	The immunogen is a synthetic peptide directed towards the middle terminal region of mouse GTPBP3
Specificity:	<b>Expected reactivity:</b> Mouse
Formulation:	Liquid. Purified antibody supplied in 1x PBS buffer with 0.09% (w/v) sodium azide and 2% sucrose.
Concentration:	lot specific
Purification:	Affinity purified
Conjugation:	Unconjugated
Storage:	For short term use, store at 2-8°C up to 1 week. For long term storage, store at -20°C in small aliquots to prevent freeze-thaw cycles.
Stability:	Shelf life: one year from despatch.
Predicted Protein Size:	52 kDa
Gene Name:	GTP binding protein 3
Database Link:	<a href="#">NP_115933.2</a> <a href="#">Entrez Gene 70359 Mouse</a> <a href="#">Q923K4</a>
Background:	GTPase involved in the 5-carboxymethylaminomethyl modification (mnm5s2U34) of the wobble uridine base in mitochondrial tRNAs.
Synonyms:	FLJ14700; GTPBG3; MSS1; MTGP1; THDF1



[View online »](#)

## Product images:



Host: Rabbit  
Target Name: Gtpbp3  
Sample Type: Mouse Heart Lysate  
Antibody Dilution: 1.0µg/ml

Host: Rabbit  
Target Name: GTPBP3  
Sample Tissue: Mouse Heart lysates  
Antibody Dilution: 1ug/ml