

## Product datasheet for **TA363319**

### Nek10 Rabbit Polyclonal Antibody

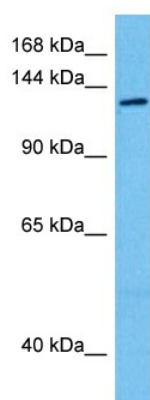
#### Product data:

Product Type:	Primary Antibodies
Applications:	WB
Reactivity:	Mouse
Host:	Rabbit
Clonality:	Polyclonal
Immunogen:	The immunogen is a synthetic peptide directed towards the middle region of mouse NEK10
Specificity:	<b>Expected reactivity:</b> Mouse
Formulation:	Liquid. Purified antibody supplied in 1x PBS buffer with 0.09% (w/v) sodium azide and 2% sucrose. <i>Note that this product is shipped as lyophilized powder to China customers.</i>
Concentration:	lot specific
Purification:	Affinity purified
Conjugation:	Unconjugated
Storage:	For short term use, store at 2-8°C up to 1 week. For long term storage, store at -20°C in small aliquots to prevent freeze-thaw cycles.
Stability:	Shelf life: one year from despatch.
Predicted Protein Size:	126 kDa
Gene Name:	NIMA (never in mitosis gene a)- related kinase 10
Database Link:	<a href="#">NP_001182158.1</a> <a href="#">Entrez Gene 674895 Mouse</a> <a href="#">Q3UGM2</a>
Background:	The function of this protein remains unknown.
Synonyms:	FLJ32685



[View online »](#)

## Product images:



Host: Rabbit  
Target Name: Nek10  
Sample Type: Mouse Kidney Lysate  
Antibody Dilution: 1.0 $\mu$ g/ml

Host: Rabbit  
Target Name: NEK10  
Sample Tissue: Mouse Kidney lysates  
Antibody Dilution: 1 $\mu$ g/ml