

Product datasheet for **TA363318**

Cyp2j5 Rabbit Polyclonal Antibody

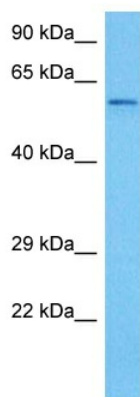
Product data:

Product Type:	Primary Antibodies
Applications:	WB
Reactivity:	Mouse
Host:	Rabbit
Clonality:	Polyclonal
Immunogen:	The immunogen is a synthetic peptide directed towards the middle terminal region of mouse CYP2J5
Specificity:	Expected reactivity: Mouse
Formulation:	Liquid. Purified antibody supplied in 1x PBS buffer with 0.09% (w/v) sodium azide and 2% sucrose.
Concentration:	lot specific
Purification:	Affinity purified
Conjugation:	Unconjugated
Storage:	For short term use, store at 2-8°C up to 1 week. For long term storage, store at -20°C in small aliquots to prevent freeze-thaw cycles.
Stability:	Shelf life: one year from despatch.
Predicted Protein Size:	58 kDa
Gene Name:	cytochrome P450, family 2, subfamily j, polypeptide 5
Database Link:	NP_034137.1 Entrez Gene 13109 Mouse O54749
Background:	The function of this protein remains unknown.
Synonyms:	Cyp2j5



[View online »](#)

Product images:



Host: Rabbit
Target Name: Cyp2j5
Sample Type: Mouse Heart Lysate
Antibody Dilution: 1.0µg/ml

Host: Rabbit
Target Name: CYP2J5
Sample Tissue: Mouse Heart lysates
Antibody Dilution: 1ug/ml