

Product datasheet for **TA363316**

Serpinb1a Rabbit Polyclonal Antibody

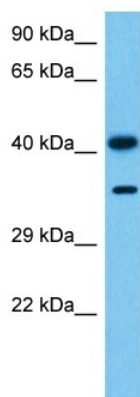
Product data:

Product Type:	Primary Antibodies
Applications:	WB
Reactivity:	Mouse
Host:	Rabbit
Clonality:	Polyclonal
Immunogen:	The immunogen is a synthetic peptide directed towards the middle terminal region of mouse SERPINB1A
Specificity:	Expected reactivity: Mouse
Formulation:	Liquid. Purified antibody supplied in 1x PBS buffer with 0.09% (w/v) sodium azide and 2% sucrose.
Concentration:	lot specific
Purification:	Affinity purified
Conjugation:	Unconjugated
Storage:	For short term use, store at 2-8°C up to 1 week. For long term storage, store at -20°C in small aliquots to prevent freeze-thaw cycles.
Stability:	Shelf life: one year from despatch.
Predicted Protein Size:	42 kDa
Gene Name:	serine (or cysteine) peptidase inhibitor, clade B, member 1a
Database Link:	NP_079705.2 Entrez Gene 66222 Mouse Q9D154
Background:	Regulates the activity of the neutrophil proteases and thus, forms complexes with chymotrypsin, elastase, cathepsin G and proteinase-3.
Synonyms:	1190005M04Rik; AI325983; EI; EIA; ELANH2; LEI; M/NEI; MGC112650; MNEI; PI2



[View online »](#)

Product images:



Host: Rabbit
Target Name: Serpinb1a
Sample Type: Mouse Brain Lysate
Antibody Dilution: 1.0µg/ml

Host: Rabbit
Target Name: SERPINB1A
Sample Tissue: Mouse Brain lysates
Antibody Dilution: 1ug/ml