

Product datasheet for **TA363313**

Serpina12 Rabbit Polyclonal Antibody

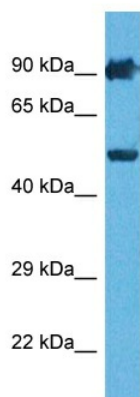
Product data:

Product Type:	Primary Antibodies
Applications:	WB
Reactivity:	Mouse
Host:	Rabbit
Clonality:	Polyclonal
Immunogen:	The immunogen is a synthetic peptide directed towards the middle region of mouse SERPINA12
Specificity:	Expected reactivity: Mouse
Formulation:	Liquid. Purified antibody supplied in 1x PBS buffer with 0.09% (w/v) sodium azide and 2% sucrose. <i>Note that this product is shipped as lyophilized powder to China customers.</i>
Concentration:	lot specific
Purification:	Affinity purified
Conjugation:	Unconjugated
Storage:	For short term use, store at 2-8°C up to 1 week. For long term storage, store at -20°C in small aliquots to prevent freeze-thaw cycles.
Stability:	Shelf life: one year from despatch.
Predicted Protein Size:	48 kDa
Gene Name:	serine (or cysteine) peptidase inhibitor, clade A (alpha-1 antiproteinase, antitrypsin), member 12
Database Link:	NP_080811.1 Entrez Gene 68054 Mouse Q7TMF5
Background:	Adipokine that modulates insulin action by specifically inhibiting its target protease KLK7 in white adipose tissues.
Synonyms:	OL-64; vaspin



[View online »](#)

Product images:



Host: Rabbit

Target Name: Serpina12

Sample Type: SP2/0 Cell Lysate

Antibody Dilution: 1.0 μ g/ml

Host: Rabbit

Target Name: SERPINA12

Sample Tissue: Mouse SP2/0 Whole Cell lysates

Antibody Dilution: 1 μ g/ml