

## Product datasheet for **TA363309**

### Whrn Rabbit Polyclonal Antibody

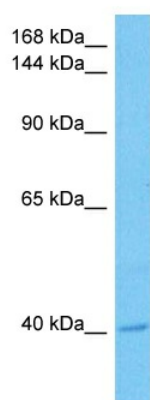
#### Product data:

Product Type:	Primary Antibodies
Applications:	WB
Reactivity:	Mouse
Host:	Rabbit
Clonality:	Polyclonal
Immunogen:	The immunogen is a synthetic peptide directed towards the middle terminal region of mouse WHRN
Specificity:	<b>Expected reactivity:</b> Mouse
Formulation:	Liquid. Purified antibody supplied in 1x PBS buffer with 0.09% (w/v) sodium azide and 2% sucrose. <i>Note that this product is shipped as lyophilized powder to China customers.</i>
Concentration:	lot specific
Purification:	Affinity purified
Conjugation:	Unconjugated
Storage:	For short term use, store at 2-8°C up to 1 week. For long term storage, store at -20°C in small aliquots to prevent freeze-thaw cycles.
Stability:	Shelf life: one year from despatch.
Predicted Protein Size:	42 kDa
Gene Name:	whirlin
Database Link:	<a href="#">NP_001008791.1</a> <a href="#">Entrez Gene 73750 Mouse</a> <a href="#">Q80VW5-8</a>
Background:	This gene encodes a protein required for elongation and actin polymerization in the hair cell stereocilia. The encoded protein is localized to the cytoplasm and co-localizes with the growing end of actin filaments. Mutations in this gene have been linked to deafness. Alternative splicing results in multiple transcript variants.
Synonyms:	1110035G07Rik; AW122018; AW742671; bM340H1.8; C430046P22Rik; Dfnb31; mKIAA1526; whirlinNT1; wi



[View online »](#)

## Product images:



Host: Rabbit  
Target Name: Whrn  
Sample Type: Mouse Kidney Lysate  
Antibody Dilution: 1.0 $\mu$ g/ml

Host: Rabbit  
Target Name: WHRN  
Sample Tissue: Mouse Kidney lysates  
Antibody Dilution: 1  $\mu$ g/ml