

## Product datasheet for **TA363308**

### Gnptg Rabbit Polyclonal Antibody

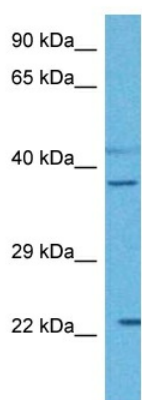
#### Product data:

Product Type:	Primary Antibodies
Applications:	WB
Reactivity:	Mouse
Host:	Rabbit
Clonality:	Polyclonal
Immunogen:	The immunogen is a synthetic peptide directed towards the middle region of mouse GNPTG
Specificity:	<b>Expected reactivity:</b> Mouse
Formulation:	Liquid. Purified antibody supplied in 1x PBS buffer with 0.09% (w/v) sodium azide and 2% sucrose.
Concentration:	lot specific
Purification:	Affinity purified
Conjugation:	Unconjugated
Storage:	For short term use, store at 2-8°C up to 1 week. For long term storage, store at -20°C in small aliquots to prevent freeze-thaw cycles.
Stability:	Shelf life: one year from despatch.
Predicted Protein Size:	34 kDa
Gene Name:	N-acetylglucosamine-1-phosphotransferase, gamma subunit
Database Link:	<a href="#">NP_766117.2</a> <a href="#">Entrez Gene 214505 Mouse</a> <a href="#">Q6S5C2</a>
Background:	Non-catalytic subunit of the N-acetylglucosamine-1-phosphotransferase complex, an enzyme that catalyzes the formation of mannose 6-phosphate (M6P) markers on high mannose type oligosaccharides in the Golgi apparatus. Binds and presents the high mannose glycans of the acceptor to the catalytic alpha and beta subunits (GNPTAB). Enhances the rate of N-acetylglucosamine-1-phosphate transfer to the oligosaccharides of acid hydrolase acceptors.
Synonyms:	C16orf27; c316G12.3; CAB56184; GNPTAG; LP2537; RJD9



[View online »](#)

## Product images:



Host: Rabbit  
Target Name: Gnptg  
Sample Type: Mouse Skeletal Muscle Lysate  
Antibody Dilution: 1.0 $\mu$ g/ml

Host: Rabbit  
Target Name: GNPTG  
Sample Tissue: Mouse Skeletal Muscle lysates  
Antibody Dilution: 1  $\mu$ g/ml