

## Product datasheet for **TA363307**

### Serpina3g Rabbit Polyclonal Antibody

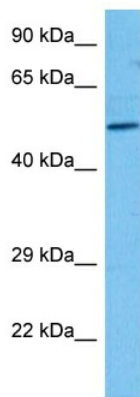
#### Product data:

Product Type:	Primary Antibodies
Applications:	WB
Reactivity:	Mouse
Host:	Rabbit
Clonality:	Polyclonal
Immunogen:	The immunogen is a synthetic peptide directed towards the middle terminal region of mouse SERPINA3G
Specificity:	<b>Expected reactivity:</b> Mouse
Formulation:	Liquid. Purified antibody supplied in 1x PBS buffer with 0.09% (w/v) sodium azide and 2% sucrose. <i>Note that this product is shipped as lyophilized powder to China customers.</i>
Concentration:	lot specific
Purification:	Affinity purified
Conjugation:	Unconjugated
Storage:	For short term use, store at 2-8°C up to 1 week. For long term storage, store at -20°C in small aliquots to prevent freeze-thaw cycles.
Stability:	Shelf life: one year from despatch.
Predicted Protein Size:	49 kDa
Gene Name:	serine (or cysteine) peptidase inhibitor, clade A, member 3G
Database Link:	<a href="#">NP_033277.1</a> <a href="#">Entrez Gene 20715 Mouse</a> <a href="#">Q5I2A0</a>
Background:	Serine and cysteine protease inhibitor. Can inhibit lysosomal papain-like proteases including the cathepsins B, G, H, K, L and V. Ineffective against elastase, granzyme A, granzyme B, or caspases 3, 8 or 9. Inhibition of cytoplasmic cathepsin B following release from the lysosome may protect cells from apoptosis. This may facilitate the survival of progenitor T-cells and the subsequent development of long term memory CD8 T-cells.
Synonyms:	2A2; A1119734; spi2; Spi2-1; Spi2/eb.1; Spi2A



[View online »](#)

## Product images:



Host: Rabbit  
Target Name: Serpina3g  
Sample Type: Mouse Skeletal Muscle Lysate  
Antibody Dilution: 1.0 $\mu$ g/ml

Host: Rabbit  
Target Name: SERPINA3G  
Sample Tissue: Mouse Skeletal Muscle lysates  
Antibody Dilution: 1  $\mu$ g/ml