

Product datasheet for **TA363305**

Ip6k2 Rabbit Polyclonal Antibody

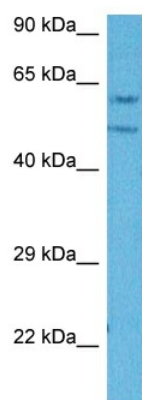
Product data:

Product Type:	Primary Antibodies
Applications:	WB
Reactivity:	Mouse
Host:	Rabbit
Clonality:	Polyclonal
Immunogen:	The immunogen is a synthetic peptide directed towards the middle region of mouse IP6K2
Specificity:	Expected reactivity: Mouse
Formulation:	Liquid. Purified antibody supplied in 1x PBS buffer with 0.09% (w/v) sodium azide and 2% sucrose. <i>Note that this product is shipped as lyophilized powder to China customers.</i>
Concentration:	lot specific
Purification:	Affinity purified
Conjugation:	Unconjugated
Storage:	For short term use, store at 2-8°C up to 1 week. For long term storage, store at -20°C in small aliquots to prevent freeze-thaw cycles.
Stability:	Shelf life: one year from despatch.
Predicted Protein Size:	52 kDa
Gene Name:	inositol hexaphosphate kinase 2
Database Link:	NP_083910.2 Entrez Gene 76500 Mouse Q80V72
Background:	Converts inositol hexakisphosphate (InsP6) to diphosphoinositol pentakisphosphate (InsP7/PP-InsP5). Converts 1,3,4,5,6-pentakisphosphate (InsP5) to PP-InsP4. Was first identified because of its ability to stimulate Na ⁺ -dependent phosphate cotransport (By similarity).
Synonyms:	IHPK2; OTTHUMP00000210229; PiUS



[View online »](#)

Product images:



Host: Rabbit
Target Name: Ip6k2
Sample Type: SP2/0 Cell Lysate
Antibody Dilution: 1.0 μ g/ml

Host: Rabbit
Target Name: IP6K2
Sample Tissue: Mouse SP2/0 Whole Cell lysates
Antibody Dilution: 1 μ g/ml