

Product datasheet for **TA363302**

Syce1 Rabbit Polyclonal Antibody

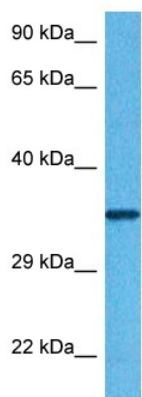
Product data:

Product Type:	Primary Antibodies
Applications:	WB
Reactivity:	Mouse
Host:	Rabbit
Clonality:	Polyclonal
Immunogen:	The immunogen is a synthetic peptide directed towards the middle region of mouse SYCE1
Specificity:	Expected reactivity: Mouse
Formulation:	Liquid. Purified antibody supplied in 1x PBS buffer with 0.09% (w/v) sodium azide and 2% sucrose.
Concentration:	lot specific
Purification:	Affinity purified
Conjugation:	Unconjugated
Storage:	For short term use, store at 2-8°C up to 1 week. For long term storage, store at -20°C in small aliquots to prevent freeze-thaw cycles.
Stability:	Shelf life: one year from despatch.
Predicted Protein Size:	38 kDa
Gene Name:	synaptonemal complex central element protein 1
Database Link:	NP_001137237.1 Entrez Gene 74075 Mouse Q9D495
Background:	Major component of the transverse central element of synaptonemal complexes (SCS), formed between homologous chromosomes during meiotic prophase. Requires SYCP1 in order to be incorporated into the central element. May have a role in the synaptonemal complex assembly, stabilization and recombination.
Synonyms:	bA108K14.6; C10orf94; CT76; RP11-108K14.6



[View online »](#)

Product images:



Host: Rabbit
Target Name: Syce1
Sample Type: Mouse Lung Lysate
Antibody Dilution: 1.0 μ g/ml

Host: Rabbit
Target Name: SYCE1
Sample Tissue: Mouse Lung lysates
Antibody Dilution: 1 μ g/ml