

Product datasheet for **TA363296**

Ift46 Rabbit Polyclonal Antibody

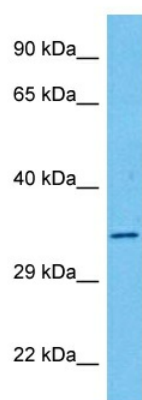
Product data:

Product Type:	Primary Antibodies
Applications:	WB
Reactivity:	Rat
Host:	Rabbit
Clonality:	Polyclonal
Immunogen:	The immunogen is a synthetic peptide directed towards the middle region of rat IFT46
Specificity:	Expected reactivity: Rat
Formulation:	Liquid. Purified antibody supplied in 1x PBS buffer with 0.09% (w/v) sodium azide and 2% sucrose.
Concentration:	lot specific
Purification:	Affinity purified
Conjugation:	Unconjugated
Storage:	For short term use, store at 2-8°C up to 1 week. For long term storage, store at -20°C in small aliquots to prevent freeze-thaw cycles.
Stability:	Shelf life: one year from despatch.
Predicted Protein Size:	33 kDa
Gene Name:	intraflagellar transport 46
Database Link:	NP_001019931.1 Entrez Gene 300675 Rat Q6AXQ9
Background:	Forms part of a complex involved in intraflagellar transport (IFT), the bi-directional movement of particles required for the assembly, maintenance and functioning of primary cilia. May play a role in chondrocyte maturation and skeletogenesis (By similarity).
Synonyms:	1500035H01Rik; AA408110; AI663846; c11orf2; R75047; RGD1307682



[View online »](#)

Product images:



Host: Rabbit
Target Name: Ift46
Sample Type: Rat Kidney Lysate
Antibody Dilution: 1.0µg/ml

Host: Rabbit
Target Name: IFT46
Sample Tissue: Rat Kidney lysates
Antibody Dilution: 1ug/ml