

## Product datasheet for **TA363289**

### Cyp39a1 Rabbit Polyclonal Antibody

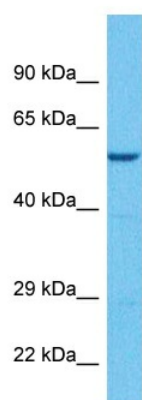
#### Product data:

Product Type:	Primary Antibodies
Applications:	WB
Reactivity:	Mouse
Host:	Rabbit
Clonality:	Polyclonal
Immunogen:	The immunogen is a synthetic peptide directed towards the middle terminal region of mouse CYP39A1
Specificity:	<b>Expected reactivity:</b> Mouse
Formulation:	Liquid. Purified antibody supplied in 1x PBS buffer with 0.09% (w/v) sodium azide and 2% sucrose. <i>Note that this product is shipped as lyophilized powder to China customers.</i>
Concentration:	lot specific
Purification:	Affinity purified
Conjugation:	Unconjugated
Storage:	For short term use, store at 2-8°C up to 1 week. For long term storage, store at -20°C in small aliquots to prevent freeze-thaw cycles.
Stability:	Shelf life: one year from despatch.
Predicted Protein Size:	54 kDa
Gene Name:	cytochrome P450, family 39, subfamily a, polypeptide 1
Database Link:	<a href="#">NP_061375.1</a> <a href="#">Entrez Gene 56050 Mouse</a> <a href="#">Q9JKI9</a>
Background:	Involved in the bile acid metabolism. Has a preference for 24-hydroxycholesterol, and converts it into a 7-alpha-hydroxylated product.
Synonyms:	hCYP39A1



[View online »](#)

## Product images:



Host: Rabbit  
Target Name: Cyp39a1  
Sample Type: Mouse Heart Lysate  
Antibody Dilution: 1.0 $\mu$ g/ml

Host: Rabbit  
Target Name: CYP39A1  
Sample Tissue: Mouse Heart lysates  
Antibody Dilution: 1 $\mu$ g/ml