

Product datasheet for **TA363288**

Vmp1 Rabbit Polyclonal Antibody

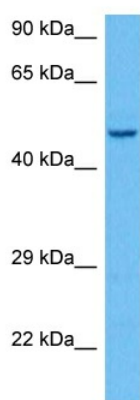
Product data:

| | |
|-------------------------|---|
| Product Type: | Primary Antibodies |
| Applications: | WB |
| Reactivity: | Mouse |
| Host: | Rabbit |
| Clonality: | Polyclonal |
| Immunogen: | The immunogen is a synthetic peptide directed towards the C terminal region of mouse TMEM49 |
| Specificity: | Expected reactivity: Mouse |
| Formulation: | Liquid. Purified antibody supplied in 1x PBS buffer with 0.09% (w/v) sodium azide and 2% sucrose. <i>Note that this product is shipped as lyophilized powder to China customers.</i> |
| Concentration: | lot specific |
| Purification: | Affinity purified |
| Conjugation: | Unconjugated |
| Storage: | For short term use, store at 2-8°C up to 1 week. For long term storage, store at -20°C in small aliquots to prevent freeze-thaw cycles. |
| Stability: | Shelf life: one year from despatch. |
| Predicted Protein Size: | 46 kDa |
| Gene Name: | vacuole membrane protein 1 |
| Database Link: | NP_083754.2 Entrez Gene 75909 Mouse Q99KU0 |
| Background: | Stress-induced protein that, when overexpressed, promotes formation of intracellular vacuoles followed by cell death. May be involved in the cytoplasmic vacuolization of acinar cells during the early stage of acute pancreatitis. Involved in cell-cell adhesion. Plays an essential role in formation of cell junctions (By similarity). Plays a role in the initial stages of the autophagic process through its interaction with BECN1. |
| Synonyms: | EPG3; TANGO5; TMEM49 |



[View online »](#)

Product images:



Host: Rabbit
Target Name: Tmem49
Sample Type: RAW264.7 Cell Lysate
Antibody Dilution: 1.0 μ g/ml

Host: Rabbit
Target Name: TMEM49
Sample Tissue: Mouse RAW264.7 Whole Cell lysates
Antibody Dilution: 1 μ g/ml