

Product datasheet for **TA363286**

Atp8a2 Rabbit Polyclonal Antibody

Product data:

Product Type:	Primary Antibodies
Applications:	WB
Reactivity:	Mouse
Host:	Rabbit
Clonality:	Polyclonal
Immunogen:	The immunogen is a synthetic peptide directed towards the N terminal region of mouse ATP8A2
Specificity:	Expected reactivity: Mouse
Formulation:	Liquid. Purified antibody supplied in 1x PBS buffer with 0.09% (w/v) sodium azide and 2% sucrose. <i>Note that this product is shipped as lyophilized powder to China customers.</i>
Concentration:	lot specific
Purification:	Affinity purified
Conjugation:	Unconjugated
Storage:	For short term use, store at 2-8°C up to 1 week. For long term storage, store at -20°C in small aliquots to prevent freeze-thaw cycles.
Stability:	Shelf life: one year from despatch.
Predicted Protein Size:	129 kDa
Gene Name:	ATPase, aminophospholipid transporter-like, class I, type 8A, member 2
Database Link:	NP_056618.1 Entrez Gene 50769 Mouse P98200



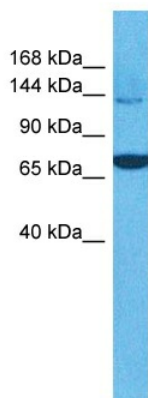
[View online »](#)

Background:

Catalytic component of a P4-ATPase flippase complex which catalyzes the hydrolysis of ATP coupled to the transport of aminophospholipids from the outer to the inner leaflet of various membranes and ensures the maintenance of asymmetric distribution of phospholipids. Phospholipid translocation seems also to be implicated in vesicle formation and in uptake of lipid signaling molecules. Reconstituted to liposomes, the ATP8A2:TMEM30A flippase complex predominantly transports phosphatidylserine (PS) and to a lesser extent phosphatidylethanolamine (PE). ATP8A2:TMEM30A may be involved in regulation of neurite outgrowth. Proposed to function in the generation and maintenance of phospholipid asymmetry in photoreceptor disk membranes and neuronal axon membranes. May be involved in vesicle trafficking in neuronal cells. Required for normal visual and auditory function; involved in photoreceptor and inner ear spiral ganglion cell survival.

Synonyms:

ATP; ATPIB; DKFZp434B1913; IB; ML-1

Product images:

Host: Rabbit
Target Name: Atp8a2
Sample Type: Mouse Kidney Lysate
Antibody Dilution: 1.0µg/ml

Host: Rabbit
Target Name: ATP8A2
Sample Tissue: Mouse Kidney lysates
Antibody Dilution: 1ug/ml