

## Product datasheet for **TA363284**

### Syt4 Rabbit Polyclonal Antibody

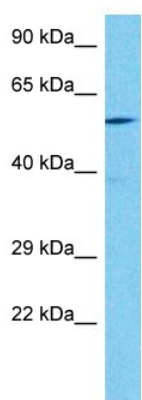
#### Product data:

Product Type:	Primary Antibodies
Applications:	WB
Reactivity:	Mouse
Host:	Rabbit
Clonality:	Polyclonal
Immunogen:	The immunogen is a synthetic peptide directed towards the middle region of mouse SYT4
Specificity:	<b>Expected reactivity:</b> Mouse
Formulation:	Liquid. Purified antibody supplied in 1x PBS buffer with 0.09% (w/v) sodium azide and 2% sucrose. <i>Note that this product is shipped as lyophilized powder to China customers.</i>
Concentration:	lot specific
Purification:	Affinity purified
Conjugation:	Unconjugated
Storage:	For short term use, store at 2-8°C up to 1 week. For long term storage, store at -20°C in small aliquots to prevent freeze-thaw cycles.
Stability:	Shelf life: one year from despatch.
Predicted Protein Size:	48 kDa
Gene Name:	synaptotagmin IV
Database Link:	<a href="#">NP_033334.2</a> <a href="#">Entrez Gene 20983 Mouse</a> <a href="#">P50232</a>
Background:	The protein encoded by this gene belongs to the synaptotagmin family. Members of this family are multi-domained, integral membrane proteins of synaptic vesicles, and are thought to serve as Ca <sup>2+</sup> sensors in the process of vesicular trafficking and exocytosis. This gene is primarily expressed in the nervous tissues.
Synonyms:	HsT1192; KIAA1342; SytIV



[View online »](#)

## Product images:



Host: Rabbit  
Target Name: Syt4  
Sample Type: Mouse Skeletal Muscle Lysate  
Antibody Dilution: 1.0 $\mu$ g/ml

Host: Rabbit  
Target Name: SYT4  
Sample Tissue: Mouse Skeletal Muscle lysates  
Antibody Dilution: 1  $\mu$ g/ml