

Product datasheet for **TA363283**

Fcgrt Rabbit Polyclonal Antibody

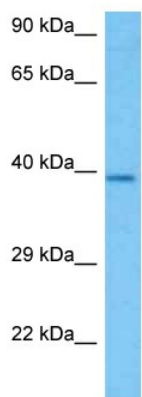
Product data:

Product Type:	Primary Antibodies
Applications:	WB
Reactivity:	Mouse
Host:	Rabbit
Clonality:	Polyclonal
Immunogen:	The immunogen is a synthetic peptide directed towards the middle region of mouse FCGR2B
Specificity:	Expected reactivity: Mouse
Formulation:	Liquid. Purified antibody supplied in 1x PBS buffer with 0.09% (w/v) sodium azide and 2% sucrose. <i>Note that this product is shipped as lyophilized powder to China customers.</i>
Concentration:	lot specific
Purification:	Affinity purified
Conjugation:	Unconjugated
Storage:	For short term use, store at 2-8°C up to 1 week. For long term storage, store at -20°C in small aliquots to prevent freeze-thaw cycles.
Stability:	Shelf life: one year from despatch.
Predicted Protein Size:	40 kDa
Gene Name:	Fc receptor, IgG, alpha chain transporter
Database Link:	NP_034319.2 Entrez Gene 14132 Mouse Q61559
Background:	Binds to the Fc region of monomeric immunoglobulins gamma. Mediates the selective uptake of IgG from milk and helps newborn animals to acquire passive immunity. IgG in the milk is bound at the apical surface of the intestinal epithelium. The resultant FcRn-IgG complexes are transcytosed across the intestinal epithelium and IgG is released from FcRn into blood or tissue fluids (By similarity). Possible role in transfer of immunoglobulin G from mother to fetus (By similarity).
Synonyms:	alpha-chain; FCRN



[View online »](#)

Product images:



Host: Rabbit
Target Name: Fcgrt
Sample Type: Mouse Pancreas Lysate
Antibody Dilution: 1.0µg/ml

Host: Rabbit
Target Name: FCGRT
Sample Tissue: Mouse Pancreas lysates
Antibody Dilution: 1 ug/ml