

Product datasheet for **TA363279**

Pde1b Rabbit Polyclonal Antibody

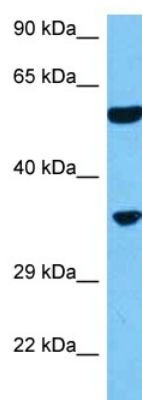
Product data:

Product Type:	Primary Antibodies
Applications:	WB
Reactivity:	Mouse
Host:	Rabbit
Clonality:	Polyclonal
Immunogen:	The immunogen is a synthetic peptide directed towards the middle region of mouse PDE1B
Specificity:	Expected reactivity: Mouse
Formulation:	Liquid. Purified antibody supplied in 1x PBS buffer with 0.09% (w/v) sodium azide and 2% sucrose. <i>Note that this product is shipped as lyophilized powder to China customers.</i>
Concentration:	lot specific
Purification:	Affinity purified
Conjugation:	Unconjugated
Storage:	For short term use, store at 2-8°C up to 1 week. For long term storage, store at -20°C in small aliquots to prevent freeze-thaw cycles.
Stability:	Shelf life: one year from despatch.
Predicted Protein Size:	58 kDa
Gene Name:	phosphodiesterase 1B, Ca ²⁺ -calmodulin dependent
Database Link:	NP_032826.1 Entrez Gene 18574 Mouse Q01065
Background:	Cyclic nucleotide phosphodiesterase with a dual-specificity for the second messengers cAMP and cGMP, which are key regulators of many important physiological processes. Has a preference for cGMP as a substrate (By similarity).
Synonyms:	PDE1B1; PDES1B; Phosphodiesterase-1B



[View online »](#)

Product images:



Host: Rabbit
Target Name: Pde1b
Sample Type: Mouse Pancreas Lysate
Antibody Dilution: 1.0 μ g/ml

Host: Rabbit
Target Name: PDE1B
Sample Tissue: Mouse Pancreas lysates
Antibody Dilution: 1 μ g/ml