

## Product datasheet for **TA363273**

### Tmc1 Rabbit Polyclonal Antibody

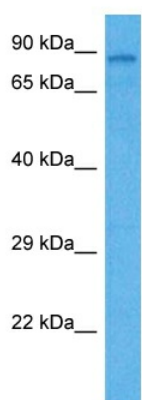
#### Product data:

Product Type:	Primary Antibodies
Applications:	WB
Reactivity:	Mouse
Host:	Rabbit
Clonality:	Polyclonal
Immunogen:	The immunogen is a synthetic peptide directed towards the N terminal region of mouse TMC1
Specificity:	<b>Expected reactivity:</b> Mouse
Formulation:	Liquid. Purified antibody supplied in 1x PBS buffer with 0.09% (w/v) sodium azide and 2% sucrose.
Concentration:	lot specific
Purification:	Affinity purified
Conjugation:	Unconjugated
Storage:	For short term use, store at 2-8°C up to 1 week. For long term storage, store at -20°C in small aliquots to prevent freeze-thaw cycles.
Stability:	Shelf life: one year from despatch.
Predicted Protein Size:	83 kDa
Gene Name:	transmembrane channel-like gene family 1
Database Link:	<a href="#">NP_083229.1</a> <a href="#">Entrez Gene 13409 Mouse</a> <a href="#">Q8R4P5</a>
Background:	Probable ion channel required for the normal function of cochlear hair cells.
Synonyms:	DFNA36; DFNB7; DFNB11; OTTHUMP00000021473



[View online »](#)

## Product images:



Host: Rabbit  
Target Name: Tmc1  
Sample Type: MEF Cell Lysate  
Antibody Dilution: 1.0 $\mu$ g/ml

Host: Rabbit  
Target Name: TMC1  
Sample Tissue: Mouse MEF Whole Cell lysates  
Antibody Dilution: 1 $\mu$ g/ml