

Product datasheet for **TA363272**

Krt20 Rabbit Polyclonal Antibody

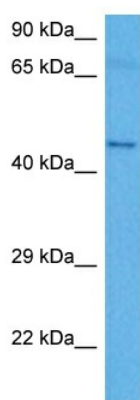
Product data:

Product Type:	Primary Antibodies
Applications:	WB
Reactivity:	Mouse
Host:	Rabbit
Clonality:	Polyclonal
Immunogen:	The immunogen is a synthetic peptide directed towards the middle region of mouse KRT20
Specificity:	Expected reactivity: Mouse
Formulation:	Liquid. Purified antibody supplied in 1x PBS buffer with 0.09% (w/v) sodium azide and 2% sucrose. <i>Note that this product is shipped as lyophilized powder to China customers.</i>
Concentration:	lot specific
Purification:	Affinity purified
Conjugation:	Unconjugated
Storage:	For short term use, store at 2-8°C up to 1 week. For long term storage, store at -20°C in small aliquots to prevent freeze-thaw cycles.
Stability:	Shelf life: one year from despatch.
Predicted Protein Size:	47 kDa
Gene Name:	keratin 20
Database Link:	NP_075745.1 Entrez Gene 66809 Mouse Q9D312
Background:	This gene encodes a member of the keratin protein family and is found within a cluster of cytokeratin genes on chromosome 11. Keratins are cytoskeletal proteins that are preferentially expressed in epithelial cells. The encoded protein may help maintain intermediate filament organization in intestinal epithelium. Phosphorylation of this protein may also influence mucin secretion in the small intestine.
Synonyms:	CD20; CK-20; CK20; Cytokeratin-20; K20; Keratin-20; KRT21; MGC35423



[View online »](#)

Product images:



Host: Rabbit
Target Name: Krt20
Sample Type: Mouse Pancreas Lysate
Antibody Dilution: 1.0 μ g/ml

Host: Rabbit
Target Name: KRT20
Sample Tissue: Mouse Pancreas lysates
Antibody Dilution: 1 ug/ml