

Product datasheet for **TA363265**

Atp6v0d2 Rabbit Polyclonal Antibody

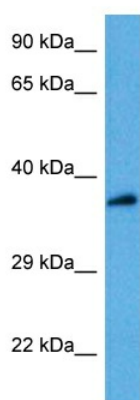
Product data:

Product Type:	Primary Antibodies
Applications:	WB
Reactivity:	Mouse
Host:	Rabbit
Clonality:	Polyclonal
Immunogen:	The immunogen is a synthetic peptide directed towards the middle region of mouse ATP6V0D2
Specificity:	Expected reactivity: Mouse
Formulation:	Liquid. Purified antibody supplied in 1x PBS buffer with 0.09% (w/v) sodium azide and 2% sucrose. <i>Note that this product is shipped as lyophilized powder to China customers.</i>
Concentration:	lot specific
Purification:	Affinity purified
Conjugation:	Unconjugated
Storage:	For short term use, store at 2-8°C up to 1 week. For long term storage, store at -20°C in small aliquots to prevent freeze-thaw cycles.
Stability:	Shelf life: one year from despatch.
Predicted Protein Size:	38 kDa
Gene Name:	ATPase, H ⁺ transporting, lysosomal V0 subunit D2
Database Link:	NP_780615.2 Entrez Gene 242341 Mouse Q80SY3
Background:	Subunit of the integral membrane V0 complex of vacuolar ATPase. Vacuolar ATPase is responsible for acidifying a variety of intracellular compartments in eukaryotic cells, thus providing most of the energy required for transport processes in the vacuolar system (By similarity). May play a role in coupling of proton transport and ATP hydrolysis. Regulator of osteoclast fusion and bone formation.
Synonyms:	ATP6D2; FLJ38708; VMA6



[View online »](#)

Product images:



Host: Rabbit
Target Name: Atp6v0d2
Sample Type: Mouse Lung Lysate
Antibody Dilution: 1.0 μ g/ml

Host: Rabbit
Target Name: ATP6V0D2
Sample Tissue: Mouse Lung lysates
Antibody Dilution: 1 ug/ml