

## Product datasheet for **TA363261**

### Cdk11b Rabbit Polyclonal Antibody

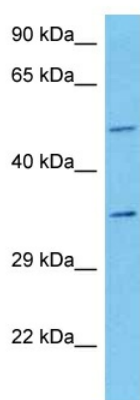
#### Product data:

Product Type:	Primary Antibodies
Applications:	WB
Reactivity:	Rat
Host:	Rabbit
Clonality:	Polyclonal
Immunogen:	The immunogen is a synthetic peptide directed towards the c terminal region of rat CDK11
Specificity:	<b>Expected reactivity:</b> Rat
Formulation:	Liquid. Purified antibody supplied in 1x PBS buffer with 0.09% (w/v) sodium azide and 2% sucrose. <i>Note that this product is shipped as lyophilized powder to China customers.</i>
Concentration:	lot specific
Purification:	Affinity purified
Conjugation:	Unconjugated
Storage:	For short term use, store at 2-8°C up to 1 week. For long term storage, store at -20°C in small aliquots to prevent freeze-thaw cycles.
Stability:	Shelf life: one year from despatch.
Predicted Protein Size:	50 kDa
Gene Name:	cyclin-dependent kinase 11B
Database Link:	<a href="#">Entrez Gene 252879 Rat P46892</a>
Synonyms:	AA989746; Cdc2l1; Cdc2l2; Cdc11b; Cdk11; CDK11-p46; CDK11-p58; CDK11-p110; p58



[View online »](#)

## Product images:



Host: Rabbit  
Target Name: Cdk11  
Sample Type: Rat Spleen Lysate  
Antibody Dilution: 1.0 $\mu$ g/ml

Host: Rabbit  
Target Name: CDK11  
Sample Tissue: Rat Spleen lysates  
Antibody Dilution: 1  $\mu$ g/ml