

## Product datasheet for **TA363258**

### Cdc14a Rabbit Polyclonal Antibody

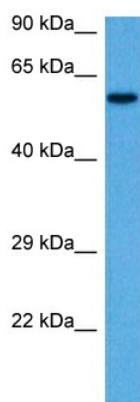
#### Product data:

Product Type:	Primary Antibodies
Applications:	WB
Reactivity:	Mouse
Host:	Rabbit
Clonality:	Polyclonal
Immunogen:	The immunogen is a synthetic peptide directed towards the middle region of mouse CDC14A
Specificity:	<b>Expected reactivity:</b> Mouse
Formulation:	Liquid. Purified antibody supplied in 1x PBS buffer with 0.09% (w/v) sodium azide and 2% sucrose.
Concentration:	lot specific
Purification:	Affinity purified
Conjugation:	Unconjugated
Storage:	For short term use, store at 2-8°C up to 1 week. For long term storage, store at -20°C in small aliquots to prevent freeze-thaw cycles.
Stability:	Shelf life: one year from despatch.
Predicted Protein Size:	60 kDa
Gene Name:	CDC14 cell division cycle 14A
Database Link:	<a href="#">NP_001074287.1</a> <a href="#">Entrez Gene 229776 Mouse</a> <a href="#">Q6GQT0-2</a>
Background:	Dual-specificity phosphatase. Required for centrosome separation and productive cytokinesis during cell division. Dephosphorylates SIRT2 around early anaphase. May dephosphorylate the APC subunit FZR1/CDH1, thereby promoting APC-FZR1 dependent degradation of mitotic cyclins and subsequent exit from mitosis (By similarity).
Synonyms:	cdc14; Cdc14A1; Cdc14A2; hCDC14



[View online »](#)

## Product images:



Host: Rabbit  
Target Name: Cdc14a  
Sample Type: Mouse Skeletal Muscle Lysate  
Antibody Dilution: 1.0 $\mu$ g/ml

Host: Rabbit  
Target Name: CDC14A  
Sample Tissue: Mouse Skeletal Muscle lysates  
Antibody Dilution: 1 $\mu$ g/ml