

Product datasheet for **TA363256**

Nab1 Rabbit Polyclonal Antibody

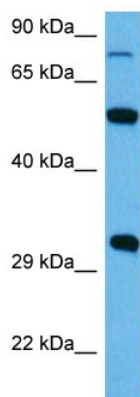
Product data:

Product Type:	Primary Antibodies
Applications:	WB
Reactivity:	Mouse
Host:	Rabbit
Clonality:	Polyclonal
Immunogen:	The immunogen is a synthetic peptide directed towards the middle region of mouse NAB1
Specificity:	Expected reactivity: Mouse
Formulation:	Liquid. Purified antibody supplied in 1x PBS buffer with 0.09% (w/v) sodium azide and 2% sucrose.
Concentration:	lot specific
Purification:	Affinity purified
Conjugation:	Unconjugated
Storage:	For short term use, store at 2-8°C up to 1 week. For long term storage, store at -20°C in small aliquots to prevent freeze-thaw cycles.
Stability:	Shelf life: one year from despatch.
Predicted Protein Size:	53 kDa
Gene Name:	Ngfi-A binding protein 1
Database Link:	NP_032693.2 Entrez Gene 17936 Mouse Q61122
Background:	Acts as a transcriptional repressor for zinc finger transcription factors EGR1 and EGR2.
Synonyms:	OTTHUMP00000205860



[View online »](#)

Product images:



Host: Rabbit
Target Name: Nab1
Sample Type: Mouse Heart Lysate
Antibody Dilution: 1.0 μ g/ml

Host: Rabbit
Target Name: NAB1
Sample Tissue: Mouse Heart lysates
Antibody Dilution: 1 μ g/ml