

## Product datasheet for **TA363253**

### Tufm Rabbit Polyclonal Antibody

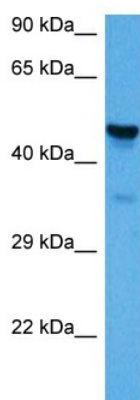
#### Product data:

Product Type:	Primary Antibodies
Applications:	WB
Reactivity:	Mouse
Host:	Rabbit
Clonality:	Polyclonal
Immunogen:	The immunogen is a synthetic peptide directed towards the middle region of mouse TUFM
Specificity:	<b>Expected reactivity:</b> Mouse
Formulation:	Liquid. Purified antibody supplied in 1x PBS buffer with 0.09% (w/v) sodium azide and 2% sucrose. <i>Note that this product is shipped as lyophilized powder to China customers.</i>
Concentration:	lot specific
Purification:	Affinity purified
Conjugation:	Unconjugated
Storage:	For short term use, store at 2-8°C up to 1 week. For long term storage, store at -20°C in small aliquots to prevent freeze-thaw cycles.
Stability:	Shelf life: one year from despatch.
Predicted Protein Size:	49 kDa
Gene Name:	Tu translation elongation factor, mitochondrial
Database Link:	<a href="#">NP_001157185.1</a> <a href="#">Entrez Gene 233870 Mouse</a> <a href="#">Q8BFR5</a>
Background:	Promotes the GTP-dependent binding of aminoacyl-tRNA to the A-site of ribosomes during protein biosynthesis. Plays also a role in the regulation of autophagy and innate immunity. Recruits ATG5-ATG12 and NLRX1 at mitochondria and serves as a checkpoint of the RIG-I/DDX58-MAVS pathway. In turn, inhibits RLR-mediated type I interferon while promoting autophagy.
Synonyms:	COXPD4; EF-Tu; EF-TuMT; EFTU; P43



[View online »](#)

Product images:



Host: Rabbit  
Target Name: Tufm  
Sample Type: Mouse Pancreas Lysate  
Antibody Dilution: 1.0 $\mu$ g/ml

Host: Rabbit  
Target Name: TUFM  
Sample Tissue: Mouse Pancreas lysates  
Antibody Dilution: 1 ug/ml