

Product datasheet for **TA363248**

MSL1 Rabbit Polyclonal Antibody

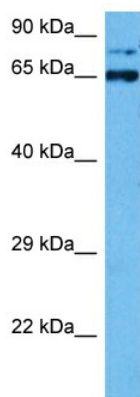
Product data:

Product Type:	Primary Antibodies
Applications:	WB
Reactivity:	Mouse
Host:	Rabbit
Clonality:	Polyclonal
Immunogen:	The immunogen is a synthetic peptide directed towards the middle region of mouse MSL1
Specificity:	Expected reactivity: Mouse
Formulation:	Liquid. Purified antibody supplied in 1x PBS buffer with 0.09% (w/v) sodium azide and 2% sucrose.
Concentration:	lot specific
Purification:	Affinity purified
Conjugation:	Unconjugated
Storage:	For short term use, store at 2-8°C up to 1 week. For long term storage, store at -20°C in small aliquots to prevent freeze-thaw cycles.
Stability:	Shelf life: one year from despatch.
Predicted Protein Size:	67 kDa
Gene Name:	male-specific lethal 1 homolog (Drosophila)
Database Link:	NP_082998.2 Entrez Gene 74026 Mouse Q6PDM1
Background:	Component of histone acetyltransferase complex responsible for the majority of histone H4 acetylation at 'Lys-17' which is implicated in the formation of higher-order chromatin. structure (By similarity). Greatly enhances MSL2 E3 ubiquitin ligase activity, promoting monoubiquitination of histone H2B at 'Lys-35' (H2BK34Ub). This modification in turn stimulates histone H3 methylation at 'Lys-5' (H3K4me) and 'Lys-80' (H3K79me) and leads to gene activation, including that of HOXA9 and MEIS1. In the MSL complex, acts as a scaffold to tether MSL3 and KAT8 together for enzymatic activity regulation.
Synonyms:	DKFZp686j17211; DKFZp686P24239; hampin; hMSL1; MGC141861; MSL-1; MSL1L1



[View online »](#)

Product images:



Host: Rabbit
Target Name: Msl1
Sample Type: Mouse Skeletal Muscle Lysate
Antibody Dilution: 1.0µg/ml

Host: Rabbit
Target Name: MSL1
Sample Tissue: Mouse Skeletal Muscle lysates
Antibody Dilution: 1ug/ml