

Product datasheet for **TA363245**

Gpbar1 Rabbit Polyclonal Antibody

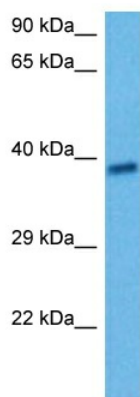
Product data:

Product Type:	Primary Antibodies
Applications:	WB
Reactivity:	Mouse
Host:	Rabbit
Clonality:	Polyclonal
Immunogen:	The immunogen is a synthetic peptide directed towards the middle region of mouse GPBAR1
Specificity:	Expected reactivity: Mouse
Formulation:	Liquid. Purified antibody supplied in 1x PBS buffer with 0.09% (w/v) sodium azide and 2% sucrose. <i>Note that this product is shipped as lyophilized powder to China customers.</i>
Concentration:	lot specific
Purification:	Affinity purified
Conjugation:	Unconjugated
Storage:	For short term use, store at 2-8°C up to 1 week. For long term storage, store at -20°C in small aliquots to prevent freeze-thaw cycles.
Stability:	Shelf life: one year from despatch.
Predicted Protein Size:	36 kDa
Gene Name:	G protein-coupled bile acid receptor 1
Database Link:	NP_778150.1 Entrez Gene 227289 Mouse Q80SS6
Background:	Receptor for bile acid. Bile acid-binding induces its internalization, activation of extracellular signal-regulated kinase and intracellular cAMP production. May be involved in the suppression of macrophage functions by bile acids (By similarity). Involved in bile acid promoted GLP1R secretion.
Synonyms:	BG37; GPCR; GPCR19; GPR131; hBG37; hGPCR19; M-BAR; MGC40597; TGR5



[View online »](#)

Product images:



Host: Rabbit
Target Name: Gpbar1
Sample Type: Mouse Spleen Lysate
Antibody Dilution: 1.0 μ g/ml

Host: Rabbit
Target Name: GPBAR1
Sample Tissue: Mouse Spleen lysates
Antibody Dilution: 1 μ g/ml