

## Product datasheet for **TA363244**

### Cyp4a1 Rabbit Polyclonal Antibody

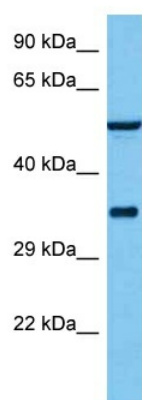
#### Product data:

Product Type:	Primary Antibodies
Applications:	WB
Reactivity:	Rat
Host:	Rabbit
Clonality:	Polyclonal
Immunogen:	The immunogen is a synthetic peptide directed towards the c terminal region of rat CYP4A10
Specificity:	<b>Expected reactivity:</b> Rat
Formulation:	Liquid. Purified antibody supplied in 1x PBS buffer with 0.09% (w/v) sodium azide and 2% sucrose.
Concentration:	lot specific
Purification:	Affinity purified
Conjugation:	Unconjugated
Storage:	For short term use, store at 2-8°C up to 1 week. For long term storage, store at -20°C in small aliquots to prevent freeze-thaw cycles.
Stability:	Shelf life: one year from despatch.
Predicted Protein Size:	55 kDa
Gene Name:	cytochrome P450, family 4, subfamily a, polypeptide 1
Database Link:	<a href="#">NP_787031.1</a> <a href="#">Entrez Gene 50549 Rat</a> <a href="#">P08516</a>
Background:	arachidonic acid monooxygenase; catalyzes the hydroxylation of omega-terminal carbon of the arachidonic acid [RGD, Feb 2006]
Synonyms:	Cyp4a10; Cyp4a22; CYPIVA10



[View online »](#)

## Product images:



Host: Rabbit  
Target Name: Cyp4a10  
Sample Type: Rat Kidney Lysate  
Antibody Dilution: 1.0µg/ml

Host: Rabbit  
Target Name: CYP4A10  
Sample Tissue: Rat Kidney lysates  
Antibody Dilution: 1ug/ml