

Product datasheet for **TA363240**

Slc38a2 Rabbit Polyclonal Antibody

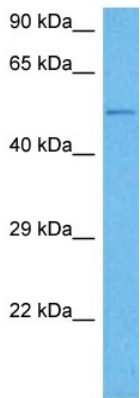
Product data:

| | |
|-------------------------|--|
| Product Type: | Primary Antibodies |
| Applications: | WB |
| Reactivity: | Mouse |
| Host: | Rabbit |
| Clonality: | Polyclonal |
| Immunogen: | The immunogen is a synthetic peptide directed towards the N terminal region of mouse SLC38A2 |
| Specificity: | Expected reactivity: Mouse |
| Formulation: | Liquid. Purified antibody supplied in 1x PBS buffer with 0.09% (w/v) sodium azide and 2% sucrose. |
| Concentration: | lot specific |
| Purification: | Affinity purified |
| Conjugation: | Unconjugated |
| Storage: | For short term use, store at 2-8°C up to 1 week. For long term storage, store at -20°C in small aliquots to prevent freeze-thaw cycles. |
| Stability: | Shelf life: one year from despatch. |
| Predicted Protein Size: | 55 kDa |
| Gene Name: | solute carrier family 38, member 2 |
| Database Link: | NP_780330.2 Entrez Gene 67760 Mouse Q8CFE6 |
| Background: | Functions as a sodium-dependent amino acid transporter. Mediates the saturable, pH-sensitive and electrogenic cotransport of neutral amino acids and sodium ions with a stoichiometry of 1:1. May function in the transport of amino acids at the blood-brain barrier and in the supply of maternal nutrients to the fetus through the placenta. |
| Synonyms: | ATA2; KIAA1382; PRO1068; SAT2; SNAT2 |



[View online »](#)

Product images:



Host: Rabbit
Target Name: Slc38a2
Sample Type: Mouse Thymus Lysate
Antibody Dilution: 1.0µg/ml

Host: Rabbit
Target Name: SLC38A2
Sample Tissue: Mouse Thymus lysates
Antibody Dilution: 1 ug/ml