

## Product datasheet for **TA363236**

### Nova1 Rabbit Polyclonal Antibody

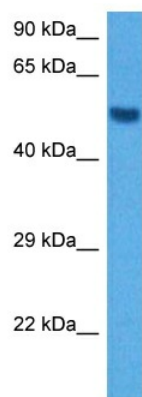
#### Product data:

Product Type:	Primary Antibodies
Applications:	WB
Reactivity:	Mouse
Host:	Rabbit
Clonality:	Polyclonal
Immunogen:	The immunogen is a synthetic peptide directed towards the N terminal region of mouse NOVA1
Specificity:	<b>Expected reactivity:</b> Mouse
Formulation:	Liquid. Purified antibody supplied in 1x PBS buffer with 0.09% (w/v) sodium azide and 2% sucrose. <i>Note that this product is shipped as lyophilized powder to China customers.</i>
Concentration:	lot specific
Purification:	Affinity purified
Conjugation:	Unconjugated
Storage:	For short term use, store at 2-8°C up to 1 week. For long term storage, store at -20°C in small aliquots to prevent freeze-thaw cycles.
Stability:	Shelf life: one year from despatch.
Predicted Protein Size:	52 kDa
Gene Name:	neuro-oncological ventral antigen 1
Database Link:	<a href="#">NP_067336.1</a> <a href="#">Entrez Gene 664883 Mouse</a> <a href="#">Q9JKN6</a>
Background:	Functions to regulate alternative splicing in neurons by binding pre-mRNA in a sequence-specific manner to activate exon inclusion. It binds specifically to the sequence UCAUY. Most likely acts to activate the inclusion of exon E3A in the glycine receptor alpha-2 chain and of exon E9 in gamma-aminobutyric-acid receptor gamma-2 subunit via a distal downstream UCAU-rich intronic splicing enhancer.
Synonyms:	Nova-1



[View online »](#)

## Product images:



Host: Rabbit  
Target Name: Nova1  
Sample Type: Mouse Brain Lysate  
Antibody Dilution: 1.0 $\mu$ g/ml

Host: Rabbit  
Target Name: NOVA1  
Sample Tissue: Mouse Brain lysates  
Antibody Dilution: 1  $\mu$ g/ml