

## Product datasheet for **TA363234**

### Gopc Rabbit Polyclonal Antibody

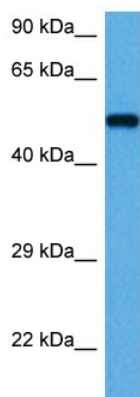
#### Product data:

Product Type:	Primary Antibodies
Applications:	WB
Reactivity:	Mouse
Host:	Rabbit
Clonality:	Polyclonal
Immunogen:	The immunogen is a synthetic peptide directed towards the middle region of mouse GOPC
Specificity:	<b>Expected reactivity:</b> Mouse
Formulation:	Liquid. Purified antibody supplied in 1x PBS buffer with 0.09% (w/v) sodium azide and 2% sucrose. <i>Note that this product is shipped as lyophilized powder to China customers.</i>
Concentration:	lot specific
Purification:	Affinity purified
Conjugation:	Unconjugated
Storage:	For short term use, store at 2-8°C up to 1 week. For long term storage, store at -20°C in small aliquots to prevent freeze-thaw cycles.
Stability:	Shelf life: one year from despatch.
Predicted Protein Size:	50 kDa
Gene Name:	golgi associated PDZ and coiled-coil motif containing
Database Link:	<a href="#">NP_001186201.1</a> <a href="#">Entrez Gene 94221 Mouse</a> <a href="#">Q8BH60</a>
Background:	Plays a role in intracellular protein trafficking and degradation. May regulate CFTR chloride currents and acid-induced ASIC3 currents by modulating cell surface expression of both channels. May also regulate the intracellular trafficking of the ADR1B receptor. May play a role in autophagy. Overexpression results in CFTR intracellular retention and degradation in the lysosomes.
Synonyms:	CAL; dj94G16.2; FIG; GOPC1; PIST



[View online »](#)

## Product images:



Host: Rabbit  
Target Name: Gopc  
Sample Type: Mouse Thymus Lysate  
Antibody Dilution: 1.0 $\mu$ g/ml

Host: Rabbit  
Target Name: GOPC  
Sample Tissue: Mouse Thymus lysates  
Antibody Dilution: 1 ug/ml